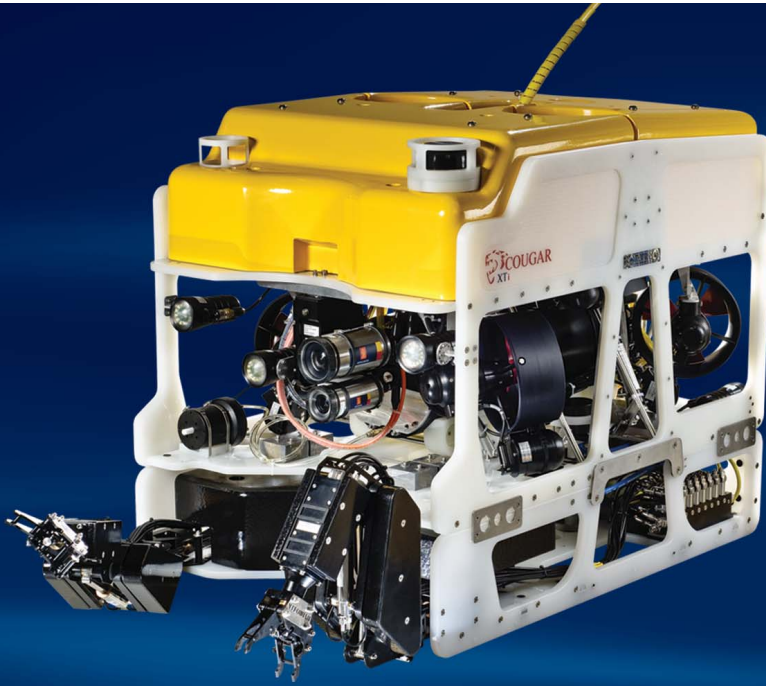




SAAB

SEAEYE COUGAR-XTi



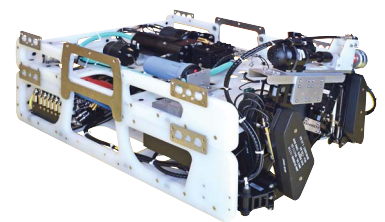
iCON
Intelligent Control
by Saab Seaeeye Ltd

THE DEEP WATER COMPACT WORK ROV

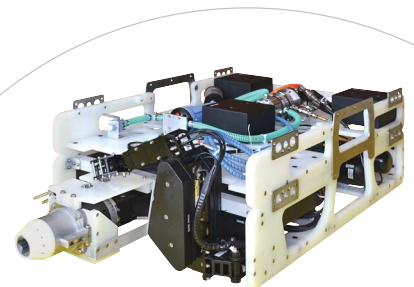
THE SEAEYE COUGAR-XTi is the deep water version of the compact, highly flexible and extremely powerful Cougar-XT.

As well as all the benefits of the Cougar-XT and the full range of optional quick-change tool skids, the Cougar-XTi also features iCON™, Saab Seaeeye's modular control and configurable power distribution system.

- Operational depth of 3000 msw
- 80 kg payload
- Range of optional quick-change tool skids
- Configurable power distribution system
- Self-diagnostics
- Modular control system
- Reduced tether and umbilical diameter
- Full range of handling systems and accessories



COUGAR-XTi DETACHABLE BRUSH SKID



COUGAR-XTi DETACHABLE TORQUE SKID

SEAEYE COUGAR-XTi

The Cougar-XTi has been developed to address the industry's need for a 3000m observation ROV, capable of providing 'self-help' and light work capabilities.

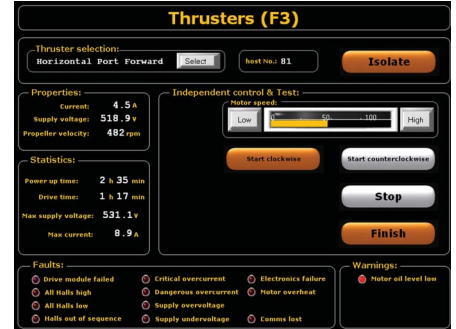
The system is based on the proven 2000m rated Cougar-XT, but with a new distributed intelligence control system, iCON, and a high frequency power supply system developed for deep water operations. These new systems have been developed and used in Saab Underwater System's military ROV systems.



SEAEYE COUGAR-XTi SPECIFICATIONS

| SPECIFICATIONS | |
|-----------------|-----------|
| Depth rating | 3000 msw |
| Length | 1515 mm |
| Height | 905 mm |
| Width | 1000 mm |
| Launch weight | 580 kg |
| Forward speed | 3.2 knots |
| Thrust forward | 170 kgf |
| Thrust lateral | 120 kgf |
| Thrust vertical | 110 kgf |
| Payload | 80 kg |

- Minimal deck footprint: same footprint as a smaller observation ROV (Lynx for instance).
- Fault tolerance for minimised downtime, thanks to a new generation modular control system allowing remote individual switching and isolation of all subsea components.
- Non-invasive and automated self-diagnostics. Each subsea component can also be health-checked and interrogated for parameters such as power, temperature, hours run, etc.



- Advanced autopilots: heading, depth, pitch, roll, stabilisation, altitude (with altimeter). Future advanced autopilots (with additional sensors): station keeping, vector transition, auto riser-tracking.
- Remote internet interface for base and Seaeeye technical support.



| SYSTEM POWER REQUIREMENTS | |
|---------------------------|---------------------------------|
| Input | 3-phase 380-480 VAC 50-60 Hz |
| ROV | 20 kVA |
| TMS | 3 kVA |
| Tooling | 5 kVA |
| LARS (typical) | 75 kVA |
| Cabin (typical) | 12 kVA |

Saab Seaeeye Ltd

20 Brunel Way, Segensworth East, Fareham, Hampshire, PO15 5SD, United Kingdom
Tel: +44 (0) 1489 898000
Fax: +44 (0) 1489 898001
e-mail: rovs@seaeeye.com www.seaeeye.com

Saab Seaeeye, Saab North America, Inc.

16225 Park Ten Place, Suite 500, Houston, TX 77084, USA
Tel: +1 (571) 294 8418

e-mail: rovusa@seaeeye.com www.seaeeye.com

